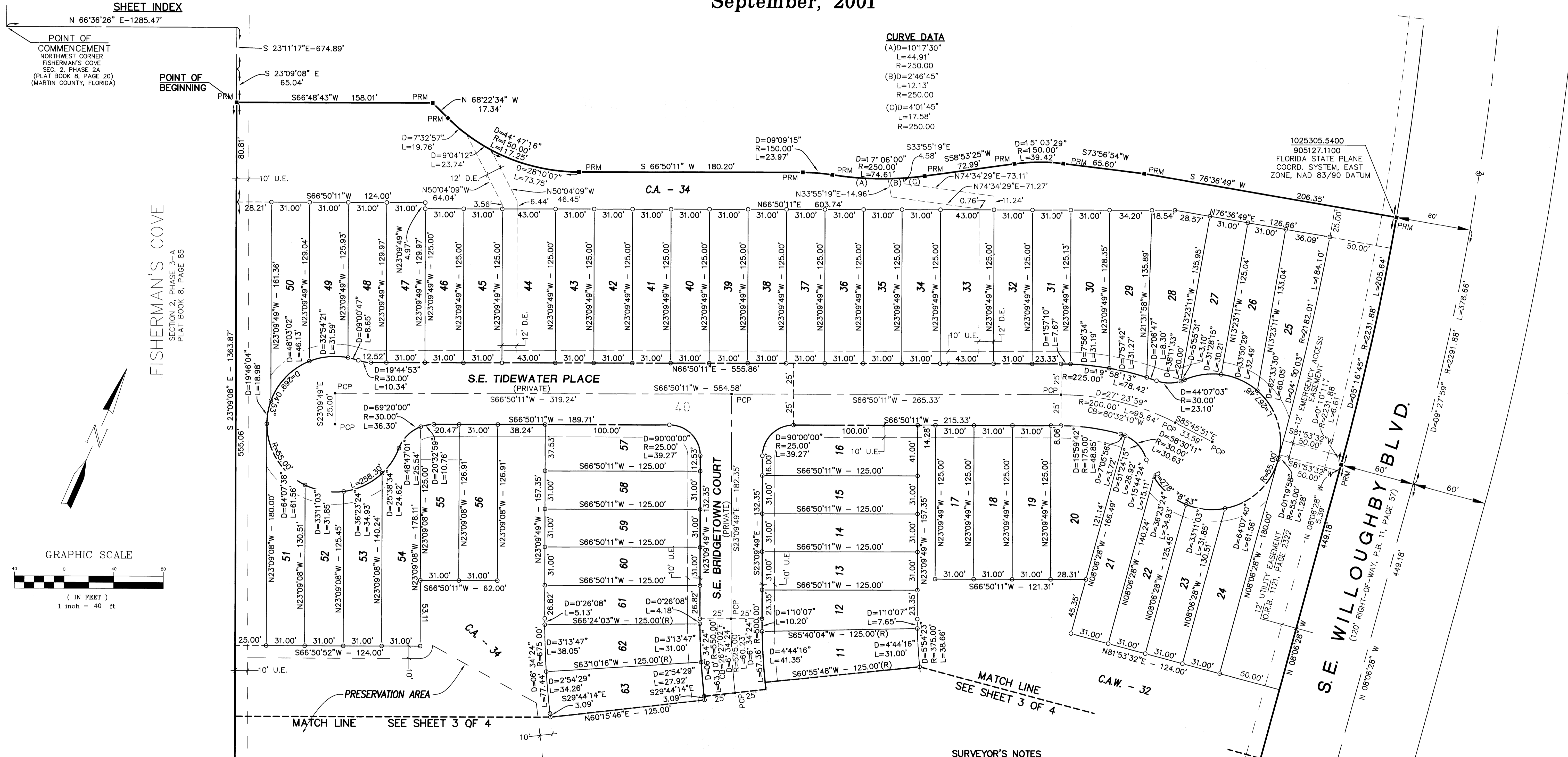
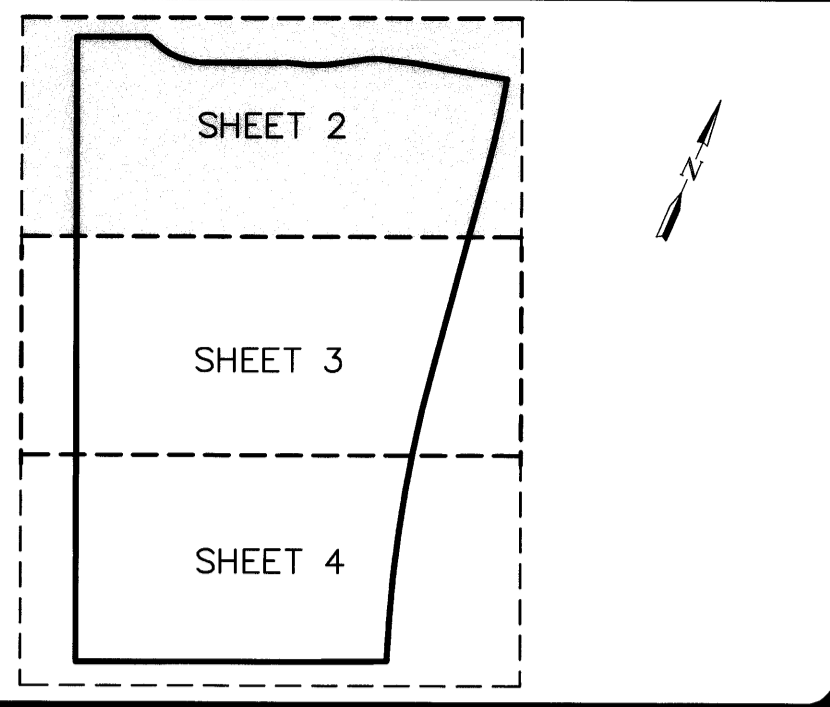


WILLOUGHBY PLAT NO. 18, A P.U.D.(r) (Willoughby Cay)

Being a parcel of land lying in the Hanson Grant, Martin County,
Florida and being a part of an abandoned portion of Stuart Farms
as recorded in Plat Book 1, Page 63, public records,
Martin County, Florida.

Plat Book 15
PAGE 22

September, 2001



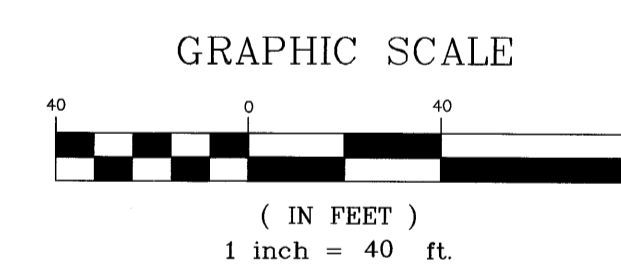
CURVE DATA

(A) D=1017.30"
L=44.91"
R=250.00"

(B) D=246.45"
L=12.13"
R=250.00"

(C) D=401.45"
L=17.58"
R=250.00"

1025305.5400
905127.1100
FLORIDA STATE PLANE
COORD. SYSTEM, EAST
ZONE, NAD 83/90 DATUM



LEGEND

• = SET PERMANENT CONTROL POINT (PCP) PARKER KALON NAIL & WASHER Labeled "GCY LB 4108"	○ = SET 3/4" IRON PIPE WITH YELLOW CAP Labeled "GCY, INC. LB 4108"	■ = SET PERMANENT REFERENCE MONUMENT (PRM) 4"x4" CONCRETE MONUMENT WITH DISK LABELED "GCY INC. P.R.M. LB 4108, PSM 4864"	D = DELTA (CENTRAL ANGLE)	L = ARC LENGTH	R = RADIUS	CB = CHORD BEARING
— = ACCESS EASEMENT (PRIVATE)	C.A. = COMMON AREA	C.A.W. = COMMON AREA WATER	D.E. = DRAINAGE EASEMENT (PRIVATE)	LB = LICENSED BUSINESS	M.E. = MAINTENANCE EASEMENT	P.C. = POINT OF CURVATURE
P.C. = POINT OF CURVATURE	P.R.C. = POINT OF REVERSE CURVATURE	PSM = PROFESSIONAL SURVEYOR AND MAPPER	P.T. = POINT OF TANGENCY	P.U.D. = PLANNED UNIT DEVELOPMENT	(R) = RADIAL LINE	U.E. = UTILITY EASEMENT

SURVEYOR'S NOTES

THIS PLAT, AS RECORDED IN ITS GRAPHIC FORM IS THE OFFICIAL DEPICTION OF THE SUBDIVIDED LANDS DESCRIBED HEREIN AND WILL IN NO CIRCUMSTANCES BE SUPPLANTED IN AUTHORITY BY ANY OTHER FORM OF THIS PLAT.

- 2) THERE MAY BE ADDITIONAL RESTRICTIONS THAT ARE NOT RECORDED ON THIS PLAT THAT MAY BE FOUND IN THE PUBLIC RECORDS OF THIS COUNTY.
- 3) THERE SHALL BE NO BUILDING OR ANY OTHER KIND OF CONSTRUCTION, OR PLACEMENT OF TREES OR SHRUBS ON DRAINAGE EASEMENTS.
- 4) BEARINGS SHOWN HEREON ARE REFERENCED TO THE NORTH LINE OF FISHERMAN'S COVE SECTION 2, PHASE 2A, AS RECORDED IN PLAT BOOK 8, PAGE 20, PUBLIC RECORDS, MARTIN COUNTY, FLORIDA. SAID LINE BEARS SOUTH 66°36'26" WEST.
- 5) THE MORTGAGEE'S CONSENT WILL BE SIMULTANEOUSLY RECORDED AS A SEPARATE DOCUMENT.

Job Number 01-1038-02-01
Licensed Business #4108

GCY
INCORPORATED
PROFESSIONAL SURVEYORS AND MAPPERS
CERTIFICATE OF AUTHORIZATION LB 4108

CORPORATE OFFICE: PO BOX 1469 • 1505 SW MARTIN HWY. • PALM CITY, FL 34991 (800) 386-1066
TALLAHASSEE OFFICE: 4909 N. MONROE STREET • TALLAHASSEE, FL 32303 (850) 536-8455